

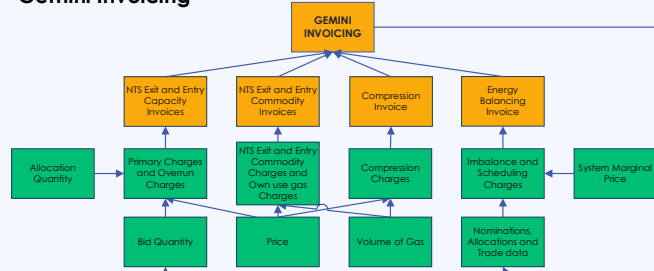
# X 100% hydrogen

RED – expected process impacts

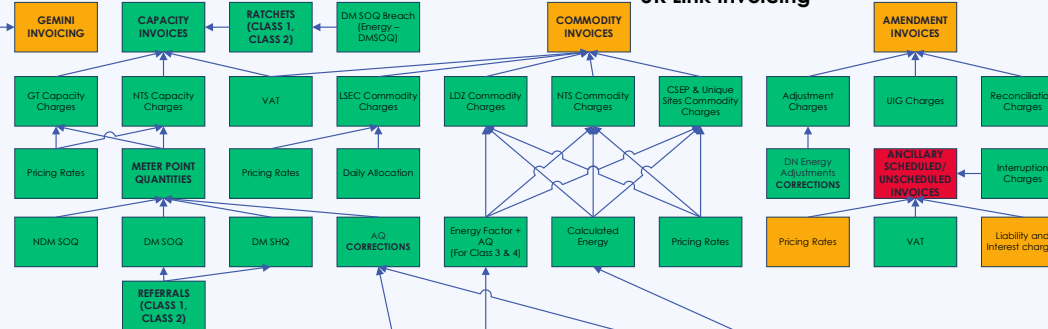
AMBER – suspected process impacts

GREEN – no process impacts anticipated

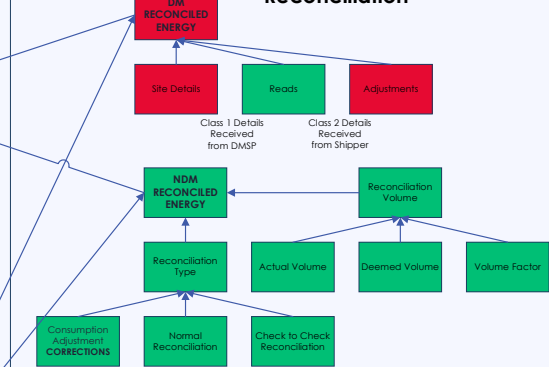
## Gemini Invoicing



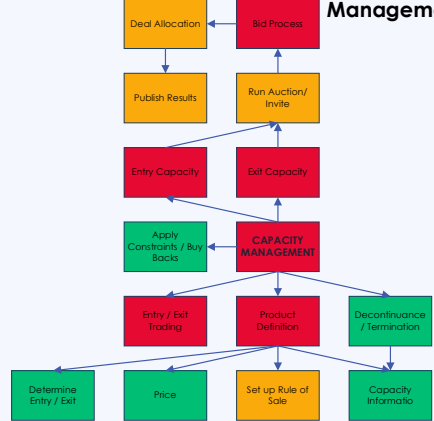
## UK Link Invoicing



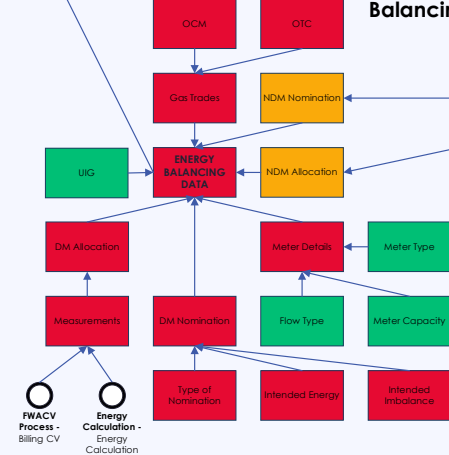
## Reconciliation



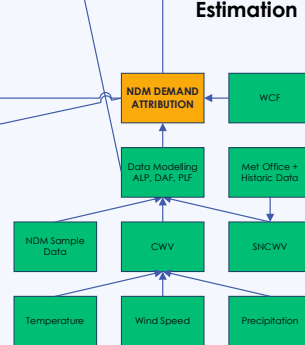
## Capacity Management



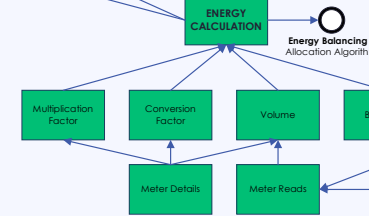
## Energy Balancing



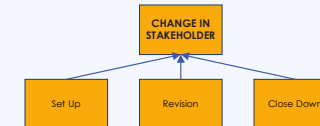
## NDM Demand Estimation



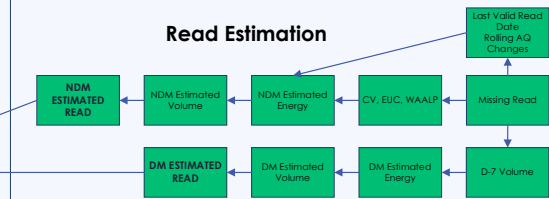
## Energy Calculation



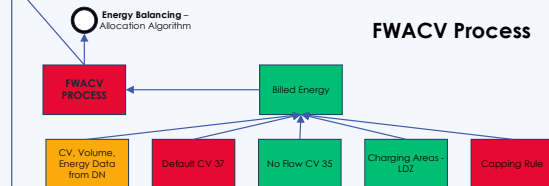
## CDSP Stakeholder Management



## Read Estimation



## FWACV Process



Zoom in to view each area in more detail