



Gemini Sustain Plus Focus Group

22 April 2024
1pm – 2.30pm

In partnership with



Please be aware this session will be recorded

Does anyone have any objections?

Agenda

Introduction and Sustain Plus Overview

- Andy Simpson

Connectivity

Onboarding video

Onboarding key information

Market Trials

Support available

Training

- Beverley Viney and Karl Davidson

Questions and feedback – from Q&A

- Andy Simpson

What's next ?

- Andy Simpson / Chris Gumbley
-

Introduction



Welcome to our fifth Gemini Sustain Plus Focus Group



Your attendance and feedback is helping us! Please keep using the Q and A tab



Focus of today's meeting – Connectivity and Market trials along with the support options

Sustain Plus Programme Progress Overview



90% of development and 70% of functional UAT complete



More than 200 users have indicated they will participate in market trials



Work on production readiness and API go-live continues to plan



System Integration Testing has progressed well and End to End business scenario Testing has commenced



Further On-Line Training modules created



Detailed implementation dress rehearsals and cutover planning has commenced



Connectivity

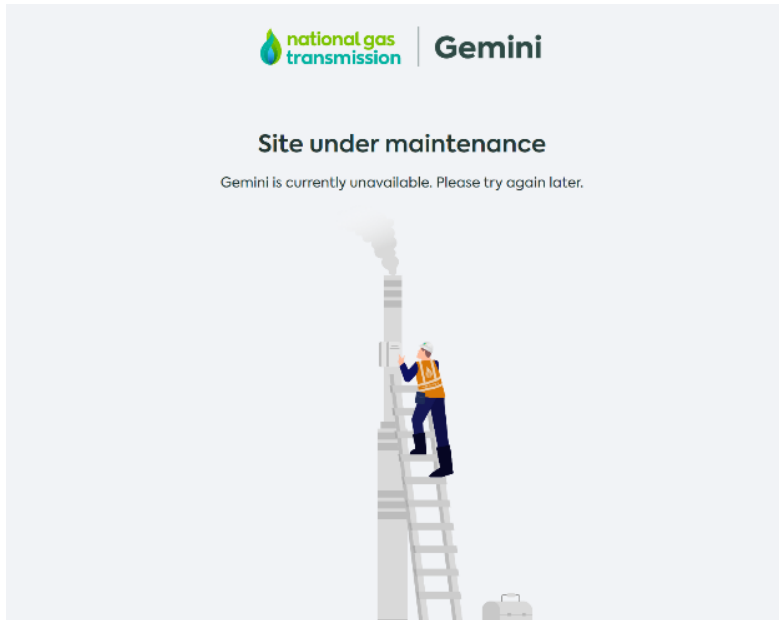


Connectivity

Please try and connect to the “To be” Production Environment

- URL: <https://geminiplus.co.uk/>
- API: TBC

• This is what success looks like



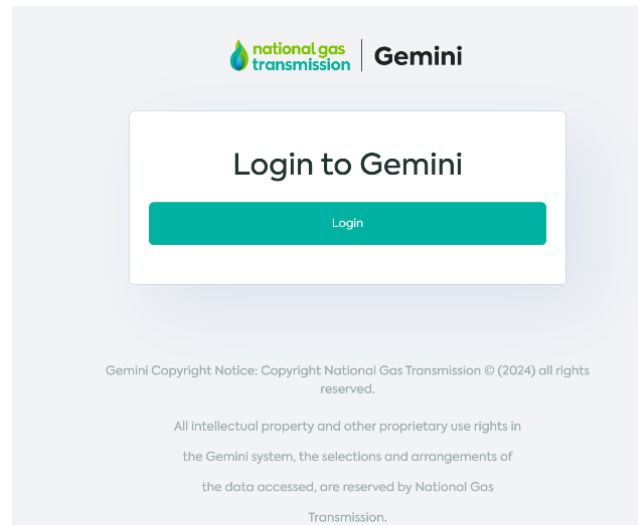
• Once you have successfully connected please complete the short [form](#)

Connectivity for Market Trials URL

Market Trials Environment - please try the connection to the Market Trials environment as this is also the URL you will use to check your onboarding.

- **Market trials environment details**
- URL: <https://test.geminiplus.co.uk/mkt/>
- API details: TBC

- **This is what success looks like**



Connectivity



- Production and Market Trial URLs are accessible over any standard internet connection using HTTPS. The URLs are published using the Azure Front Door content delivery network.



- If your organisation blocks HTTPS URLs Microsoft maintain a list of IP addresses for all of their Azure services, including Azure Front Door which are the set of IPs that would need to be whitelisted IF you need to do this, which is available here <https://www.microsoft.com/en-us/download/details.aspx?id=56519>
- Please note your existing Gemini User IDs will not work in these URLs, new IDs will be generated as part of the onboarding phase.

Connectivity Support



If you need support for the connectivity phase, the support options are;

- Sign onto our 121 Technical surgeries for any issues here: [Gemini Sustain Plus - Technical Surgeries | Eventbrite](#)
- Email Geminiengagement@correla.com
 - Please note support is only available during business days Monday- Friday, 9-5
 - Please do not call the GNCC or raise a ticket via the Service Desk

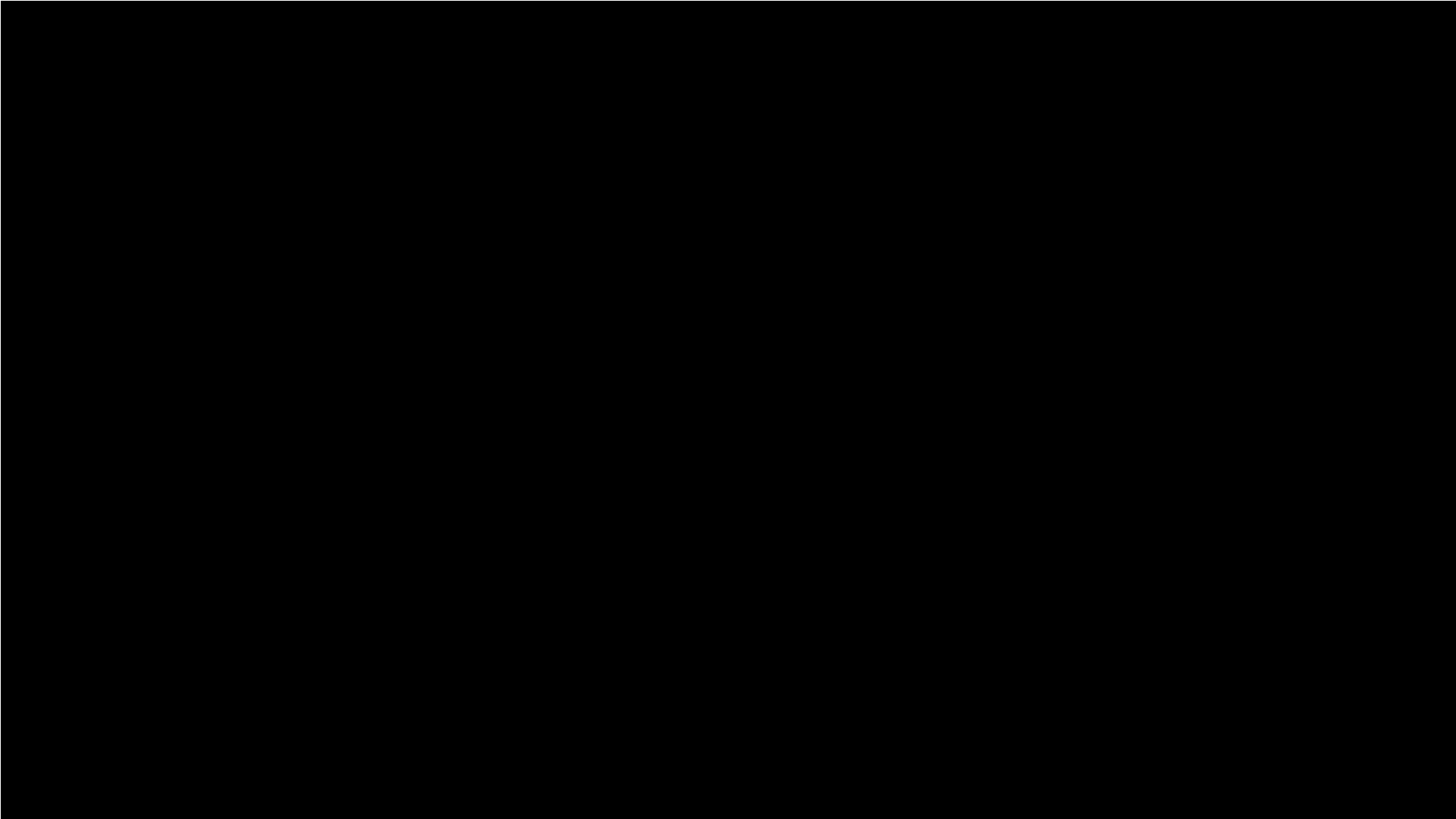


Onboarding



Onboarding Demo

[Onboarding demo on Vimeo](#)



Onboarding key info

- Email received from subject “National Gas Gemini invited you to access applications within their organization” and looks like the following


EXT || National Gas Gemini invited you to access applications within their organization




Microsoft Invitations on behalf of National Gas Gemini <invites@microsoft.com>

To: Beverley Viney



 You replied to this message on 28/03/2024 09:36.

If there are problems with how this message is displayed, click here to view it in a web browser.

 Please only act on this email if you trust the organization represented below. In rare cases, individuals may receive fraudulent invitations from bad actors posing as legitimate companies. **If you were not expecting this invitation, proceed with caution.**

Organization: National Gas Gemini

Domain: geminiidm.onmicrosoft.com

If you accept this invitation, you'll be sent to <https://myapplications.microsoft.com/?tenantid=a28d6710-895d-40c6-94e5-47139ca21feb>.


[Accept invitation](#)

Onboarding key info

- You will need to activate the invitation by clicking on the button
- You will need to follow the steps, including the authenticator link (*the type of authenticator will be your usual authenticator and may differ to the demo video*)
- The password you enter is your password you use to access your company laptop/computer, as it is following the federated access process
- Once you reach the “app” page
 - In a new browser window open the Market Trials URL <https://test.geminiplus.co.uk/mkt/> **not the production URL**
 - Success will look like the following slide, there is no data yet
 - If you try and access the production URL you will see the maintenance page until implementation
 - **We encourage you to complete Connectivity and Onboarding by 31 May and ahead of Market Trials**

What does successful connectivity look like, via the Market Trials URL?

← ↻ 🔒 https://geminiplus.co.uk 🔊 ☆ 🏠 📄 ⌵ 📌 📁 ⋮


 | **Gemini**

Login to Gemini

Login

Gemini Copyright Notice: Copyright National Gas Transmission © (2023) all rights reserved.

All intellectual property and other proprietary use rights in the Gemini system, the selections and arrangements of the data accessed, are reserved by National Gas Transmission.

 | **Gemini**

National Gas Transmission © 2024 [About us](#) [Terms of Use](#) [Privacy Policy](#) 18 Mar 2024, 09:16:07 GMT PROD

What does successful Log in look like?

The screenshot displays a web browser window with the URL `https://geminiplus.co.uk/error`. The page header includes the Gemini logo and a search bar. A user profile dropdown menu is open on the right, showing the user's name 'Tarun Parashar' and email 'tarun.parashar@80hg.io'. The main content area displays a 404 error message: '404 That's an error. The requested URL was not found. Back to home'. The footer contains 'National Gas Transmission © 2024', 'About us', 'Terms of Use', 'Privacy Policy', and the date '07 Mar 2024, 12:50:18 GMT'.



Market Trials update



Market Trials

Market Trials will have 2 Key phases:

Market Trials API testing - 03/06/2024 – 14/06/2024

During this 2 week period for those that wish to test their API connection and ID we be providing a dedicated phase for users to test API in connection with the Market Trials Environment ahead of the API Go-live phase which are aiming to start late June/ Early July till September.

Further information on APIs will coming out in the next 2 weeks from the programme.

Market Trials Processes – 17/06/2024 – 17/07/2024

This 5 week period will allow Market Trials participants to trial a set of key processes supported by dummy data to familiarise themselves with the new look and feel of the upgraded Gemini application. It will also provide an opportunity to view any changes that maybe introduced, as well as to navigate any other screens that have been fully developed but not supported by data.

You need to have registered for Market Trials by **13th May 2024**.

Please use the form below to register: <https://forms.office.com/e/mmdrJx4JJz>

Market Trials Scope

The key Capacity processes covered in Market Trials and supported by data are as follows:

High Level Scope	Process
Capacity	
Short Term Auctions	Day Ahead Entry & Exit FIRM
	Day Ahead Entry & Exit INT/OFF
	Within Day Entry & Exit FIRM
	Product Info
Capacity Reporting	View Reports
Capacity Dashboards	View Dashboards

Market Trials Scope

The key Energy Balancing processes that will be covered in Market Trials and supported by data are as follows:

High Level Scope	Process
Energy Balancing	
NBP Nominations	NBP Trades
	Confirmation
IP Nominations	Single Sided Nomination
	Double Sided Nomination
	Confirmation
Non-NBP & Non-IP Nominations	Entry Nomination
	Exit Nomination
Nomination Bulk Upload	Nomination Bulk Upload
NBP Renominations	NBP Trades
	Confirmation
IP Renominations	Single Sided Nomination
	Double Sided Nomination
	Confirmation
Non-NBP & Non-IP Renominations	Entry Renomination
	Exit Renomination

High Level Scope	Process
Allocation Exit	Users output allocations
Energy Balancing Reporting	View Reports
Energy Balancing Dashboards	View Dashboards
Cash out rates	View Cashout Rates



Support available



Support available



If you need support for the connectivity phase, the support options are;

- Sign onto our 121 Technical surgeries for any issues here: [Gemini Sustain Plus - Technical Surgeries | Eventbrite](#)
- Email Geminiengagement@correla.com
 - Please note support is only available during business days Monday- Friday, 9-5
 - Please do not call the GNCC or raise a ticket via the Service Desk



Check List



Checklist for Connectivity, Onboarding and Market Trials

Please use the following as a checklist for Connectivity, Onboarding and Market Trials

Check your organisation can access the HTTPS URLs below*:

Gemini Market trials Environment

<https://test.geminiplus.co.uk/mkt/>

Gemini To be Production

<https://geminiplus.co.uk/>

*The URLs are supported by the 4 main browsers Google Chrome, Microsoft Edge, Safari, Firefox running in support versions.

If required white list Azure front door IPs which will give you access to both Market Trails and to be production, which can be found here: <https://www.microsoft.com/en-us/download/details.aspx?id=56519>

Change URLs to API, when API URLs are issued

Ensure you have received Gemini user IDs:

IDs for Market trials – if you have registered to participate

ID(s) for to be production

Sign onto our 121 Technical surgeries for any issues here: [Gemini Sustain Plus - Technical Surgeries | Eventbrite](#)

You have signed up for the Training system when available, ETA May 2024

Undertake the 2 mandatory modules (Navigation of the new Gemini UI & Training solution)

Undertake any optional training for the processes your users conduct in Gemini

Agreement for access to more than one shortcode

Agreements/ Access to multiple shortcodes – Please note if you wish for your organisation to see more than one Shortcode or you use an agent you will need the appropriate agreement as detailed in UNC V.6.

Please contact customerlifecycle.spa@xoserve.com to arrange or to check you have the appropriate agreement(s)



Training



Training for Market Trials

- To ensure that Market trials participants have to relevant training material for the processes being support in Market Trials we will be taking the Information from the Market trials registry form and onboarding users to the LMS the W/C 03/06/2024 giving participants.
- Users will then receive invites via email from Training@correla.com
- Upon accessing the LMS for the first times users will have to undertake 2 mandatory E-modules, these are:
 - Basic LMS navigation
 - Gemini UI E-module
- These will take 10-30 mins each depending on the user.
- Upon completing these 2 mandatory e-modules users will then have access to the E-modules that their market segment undertakes that will be covered in Market Trials.
- Further E-modules content will come out for each market segment prior to go-live, these will be flagged in the home page when users log into the LMS after a new E-modules has been uploaded.
- Any users that aren't participating in Market Trials will need to self register, information on how to do this will be available at the next focus group.



Q & A

Andy Simpson





Next Steps

Andy Simpson



Key Reminders

- **The Market Trials invitation was issued on 17 January 2024**

To participate in Market Trials, you will need to have registered by **13 May 2024**. Please use the form below to register: <https://forms.office.com/e/mmdrJx4JJz>

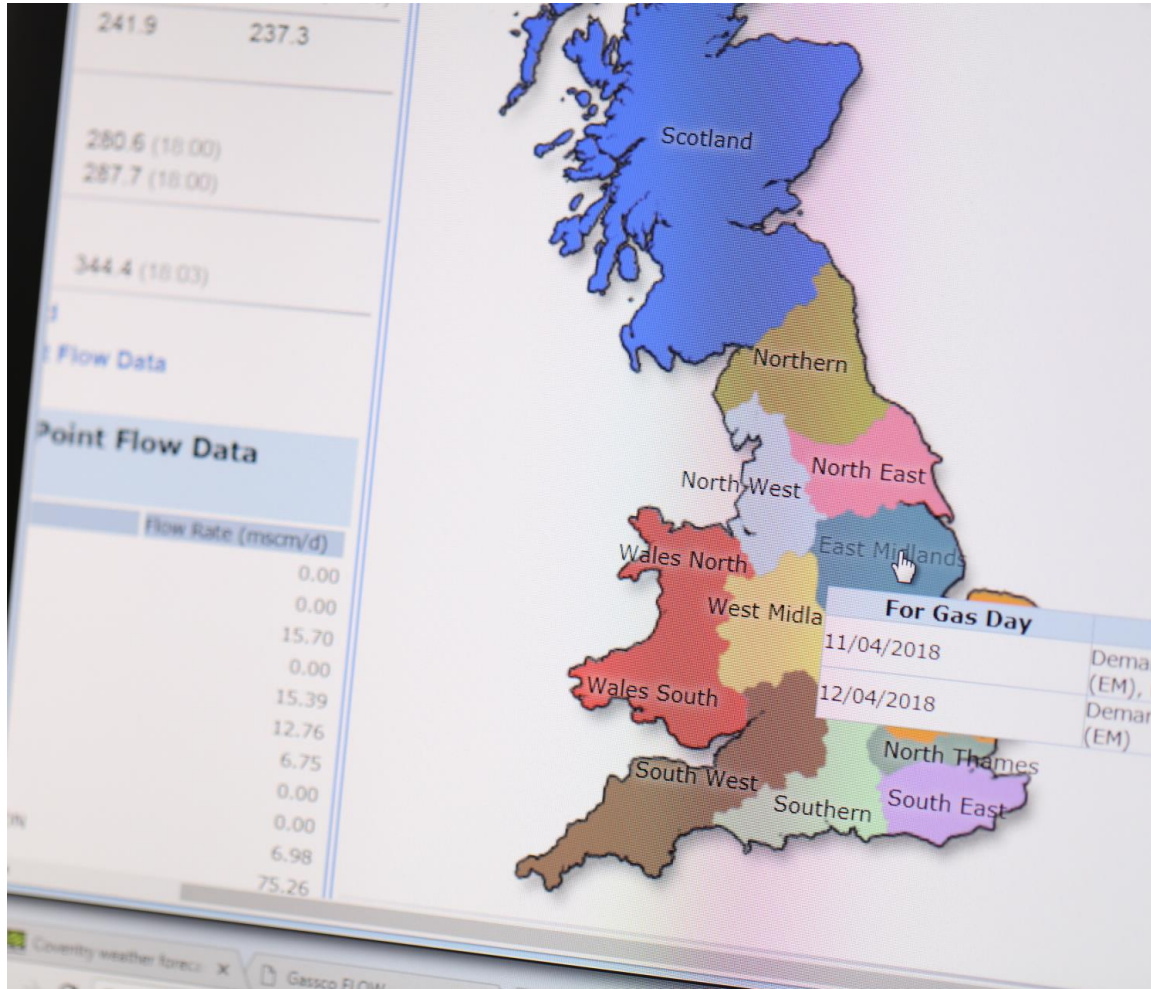
- **Connectivity, Onboard and Market Trials Checklist**

We recommend you save the checklist provided on slide 24

Support – book into 1-2-1 Technical surgeries [Gemini Sustain Plus - Technical Surgeries Tickets, Multiple Dates | Eventbrite](#) if required

Agreements/ Access to multiple shortcodes – Please note if you wish for your organisation to see more than one Shortcode or use an agent you will need the appropriate agreement as detailed in UNC V.6. Please contact customerlifecycle.spa@xoserve.com to arrange or check your agreement(s)

Thank You



- All the information from today will be loaded on to our dedicated Gemini Sustain Plus Website:
 - <https://www.xoserve.com/change/investment-change/gemini-changes-overview/gemini-sustain-plus/>
- We will also update the Q&A captured today
- Please give feedback via the forms link
- If you'd like to reach out to the programme directly, please use our box account: Box.GeminiSustainPlus@nationalgas.com and a member of the team will respond